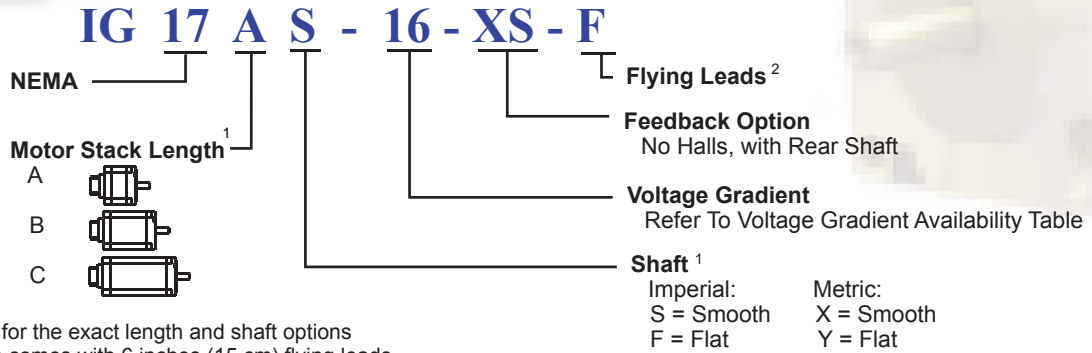


IG 17- F with XS Feedback

Model Numbering

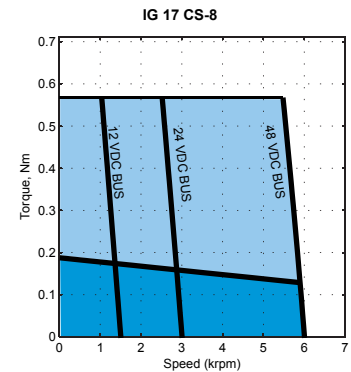
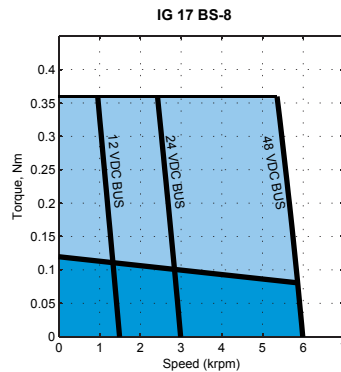
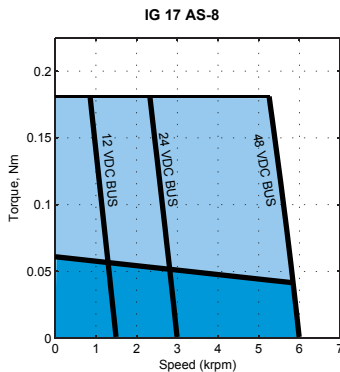


1. Refer to Dimensions for the exact length and shaft options
2. The F housing option comes with 6 inches (15 cm) flying leads

Voltage Gradient

Voltage Constant K_E (V/kRPM)	4	8	11	16
Frame Size IG 17				

Performance Curves



Contact factory for torque-speed curves of other motors

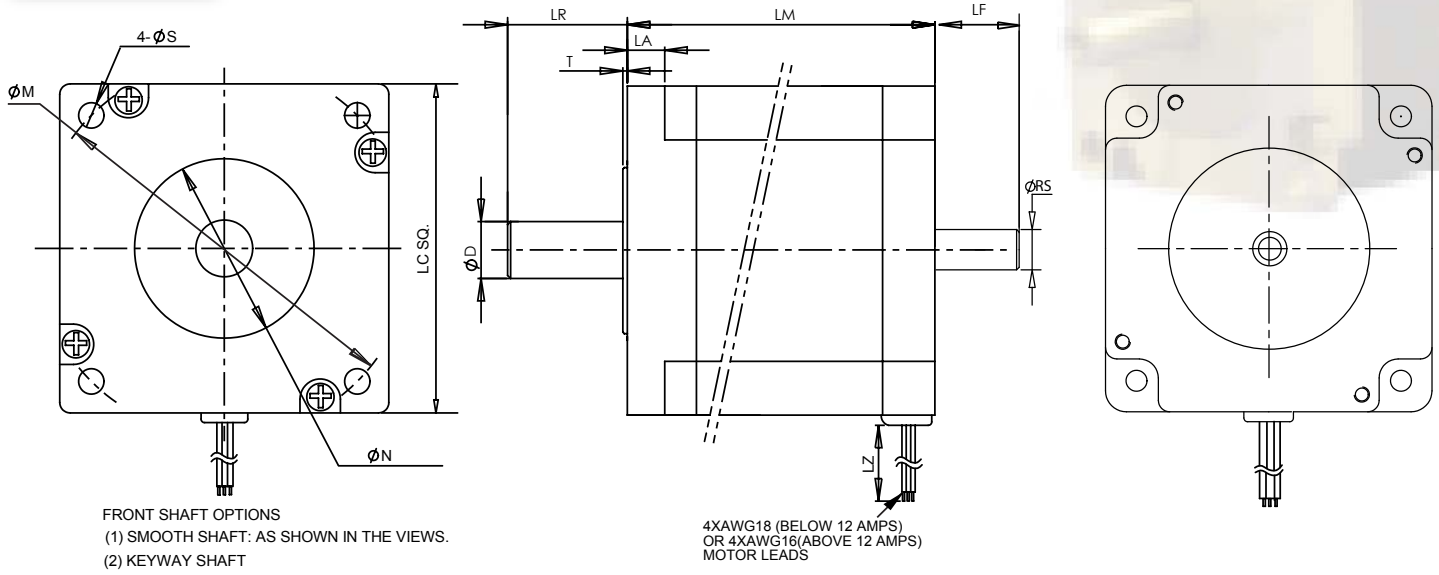
Electrical Specs

NEMA 17																			
Index	Model Number	Weight		Torque Constant (Peak) (L2L)		Voltage Constant	Cont. Stall Torque		Cont. Stall Current		Peak Stall Torque		Peak Stall Current	Max BEMF (Peak) (L2L)	Max Speed	L-to-L Resistance	L-to-L Inductance	Rotor Inertia	
		W		K_T		K_E	T_{cs}		I_{cs}		T_P		I_P	U_{max}	n_{max}	R	L	J	
		kg	lb	Nm/A	lb-in/A	V/krpm	Nm	lb-in	A	Nm	lb-in	A	V	rpm	Ohms	mH	kg-cm ²	lb-in-sec ²	
1	IG 17 AS - 4	0.32	0.71	0.04	0.39	4.00	0.06	0.53	1.36	0.18	1.59	4.08	32.00	8000	0.62	0.53	0.13	0.00012	
2	IG 17 BS - 4	0.48	1.06	0.04	0.39	4.00	0.12	1.06	2.72	0.36	3.19	8.16	32.00	8000	0.27	0.28	0.26	0.00023	
3	IG 17 CS - 4	0.63	1.39	0.04	0.39	4.00	0.19	1.71	4.38	0.57	5.04	12.92	32.00	8000	0.14	0.13	0.39	0.00035	
4	IG 17 AS - 8	0.32	0.71	0.09	0.78	8.00	0.06	0.53	0.68	0.18	1.59	2.04	64.00	8000	2.50	2.10	0.13	0.00012	
5	IG 17 BS - 8	0.48	1.06	0.09	0.78	8.00	0.12	1.06	1.36	0.36	3.19	4.08	64.00	8000	1.05	1.00	0.26	0.00023	
6	IG 17 CS - 8	0.63	1.39	0.09	0.78	8.00	0.19	1.71	2.19	0.57	5.04	6.46	64.00	8000	0.58	0.50	0.39	0.00035	
7	IG 17 AS - 11	0.32	0.71	0.12	1.07	11.00	0.06	0.53	0.49	0.18	1.59	1.48	88.00	8000	5.90	4.70	0.13	0.00012	
8	IG 17 BS - 11	0.48	1.06	0.12	1.07	11.00	0.12	1.06	0.99	0.36	3.19	2.97	88.00	8000	2.30	2.15	0.26	0.00023	
9	IG 17 CS - 11	0.63	1.39	0.12	1.07	11.00	0.19	1.71	1.59	0.57	5.04	4.70	88.00	8000	0.70	1.25	0.39	0.00035	
10	IG 17 AS - 16	0.32	0.71	0.18	1.56	16.00	0.06	0.53	0.34	0.18	1.59	1.02	128.00	8000	10.50	8.40	0.13	0.00012	
11	IG 17 BS - 16	0.48	1.06	0.18	1.56	16.00	0.12	1.06	0.68	0.36	3.19	2.04	128.00	8000	4.10	4.00	0.26	0.00023	
12	IG 17 CS - 16	0.63	1.39	0.18	1.56	16.00	0.19	1.71	1.09	0.57	5.04	3.23	128.00	8000	1.20	2.34	0.39	0.00035	

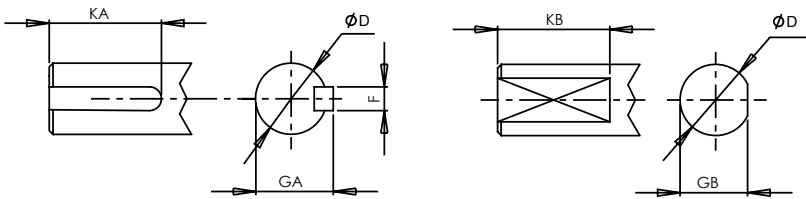
Feb, 20, 06

IG 17- F with XS Feedback

Motor Drawing



NOTE:
 THE MOTOR HAS IP40 ENCLOSURE
 AND SHAFT PROTECTION.



Units: inches (mm)

IG	LM	T	LR	LC	LZ	LF	ØRS	N	S	M	
17	A	1.496 (38)	0.079 (2.0)	0.945 (24)	1.665 (42.3)	12 (304.8)	0.472 (12)	0.1969 ⁰ _{-0.0005} (5 ⁰ _{-0.013})	0.866 ⁰ _{-0.002} (22.00 ⁰ _{-0.05})	0.118 (3.0) ¹	1.725 (43.82)
	B	2.126 (54)									
	C	2.756 (70)									

¹S is M3*0.5 min depth 0.2 (5.1) threaded hole

Imperial Shaft Option (S/F/K), Units: inches							Metric Shaft Option (X/Y/Z), Units: mm					
IG	D	F	GA	KA	GB	KB	D	F	GA	KA	GB	KB
17	0.1969 ⁰ _{-0.0005}	-	-	-	0.177 ⁰ _{-0.004}	0.50	5 ⁰ _{-0.013}	-	-	-	4.5 ⁰ _{-0.1}	12.7

Power Cable Wire Code

Wire Color	Function
YEL	PHASE U
GRN	PHASE V
BLU	PHASE W
GRN/YEL	PE



Feb, 20, 06