

# ServoVista Installation

The image shows a Windows XP desktop environment. In the foreground, a circular graphic contains the ServoVista logo and text: "servo dynamics www.servodynamics.com ServoVista User Friendly Software". Below this, a list of included items is shown: "- Dotnetfx", "- ServoVista Software", "- USB Driver", "- ServoVista Manual", "- Ruby Manual", and "- Remote Support".

In the background, the "Found New Hardware Wizard" window is open, displaying the message: "Welcome to the Found New Hardware Wizard. This wizard helps you install software for: CP2103 USB to UART Bridge Controller." Below this, there are options for installation and a "Cancel" button.

Another window in the background shows a control interface with a graph and several knobs. Below the graph, the text reads: "Please first install Dotnetfx and then ServoVista 05.31.07".

At the bottom of the screen, a status bar shows the date and time: "3/29/2007, 12:32:23 PM | VERBOSE Device Disconnected", "3/29/2007, 12:35:30 PM | VERBOSE Device Disconnected", and "3/29/2007, 12:36:01 PM | VERBOSE Device Connected". The status bar also indicates "READY" and "Connected".

Version 01

## *Important Notice:*

This document is object to the following conditions and restrictions:

- This Document contains proprietary information belonging to Servo Dynamics. This information is provided for the purpose of assisting users of the servo drive in its installation.
- The text and graphics in this document are for the purpose of illustration and reference only.
- The information in this document is object to change without notice.

## Table of Contents:

<b>1</b>	<b>SERVOVISTA INSTALLATION INSTRUCTION</b>	<b>4</b>
1.1	PC/Hardware Requirements	4
1.2	Software Installation	4
1.3	Connecting the Drive	4
<b>2</b>	<b>USING THE COMMUNICATION SOFTWARE</b>	<b>7</b>

## Table of Figures:

Figure 1 - Found New Hardware	4
Figure 2 - Wizard Searches for driver	5
Figure 3 - Installs the composite device	5
Figure 4 - The wizard has finished installing the software for CP210xUSB	5
Figure 5 – Found New Hardware	6
Figure 6 - Wizard Searches for driver	6
Figure 7 – Installs CP210xUSB to UART Bridge Controller	6
Figure 8	7
Figure 9 – Auto Detect	7
Figure 10 - Connect to Device	8
Figure 11 - Servovista Connection Failure	8
Figure 12 – ServoVista Software Status/Values Page	9

# 1 ServoVista installation Instruction

ServoVista is used for configuring and monitoring Servo Dynamics digital drives.

## 1.1 PC/Hardware Requirements

Minimum PC requirements:

- Processor Minimum Pentium III
- Operating system WINDOWS 2000 / XP/VISTA
- USB Connection 2.00
- Hard Drive Min. 10 MB
- CD-ROM drive
- USB Cable 5-Pin Mini-B Connector (Digital Drive Side)

## 1.2 Software Installation

- Make sure that the drive is not connected to the computer
- Insert the CD-ROM into the PC
- Install dotnetfx from the CD
- Run Setup and follow the screens

## 1.3 Connecting the Drive

- Connect the USB cable to the PC and Drive
- Connect and power up the 24V control power to the drive
- Windows will recognize a device is connected to the USB port. Follow the install screens to complete USB driver installation, screens shown below:



Figure 1 - Found New Hardware



Figure 2 - Wizard Searches for driver

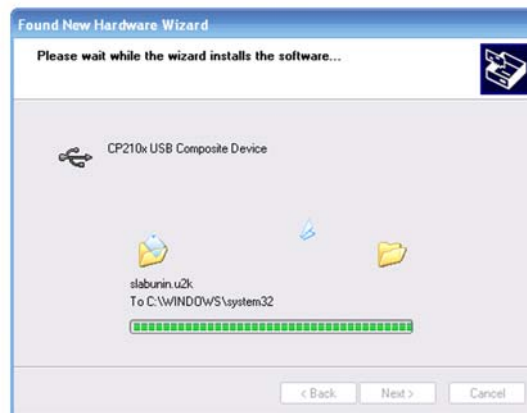


Figure 3 - Installs the composite device



Figure 4 - The wizard has finished installing the software for CP210xUSB



Figure 5 – Found New Hardware

Please choose Install the software automatically



Figure 6 - Wizard Searches for driver

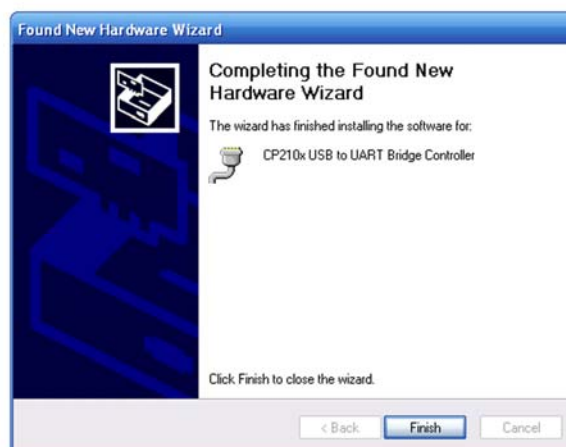


Figure 7 – Installs CP210xUSB to UART Bridge Controller

## 2 Using the Communication Software

Open the software



Figure 8

Go to Communication Tab → Connection Setup → USB/RS232 → Auto Detect, as shown in Figure 9.

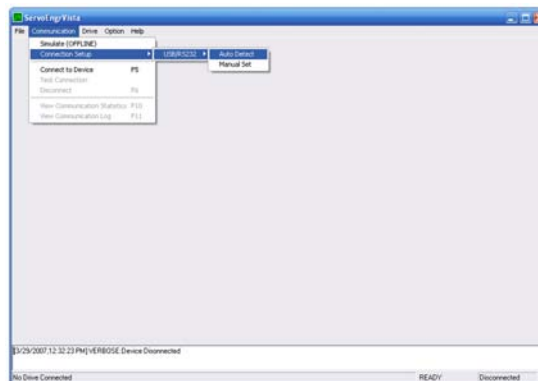


Figure 9 – Auto Detect

The message “Found the USB port installed on COMx, can this port be used for the connection”, will popup and click Yes.

Go to communication tab → Connect to Device

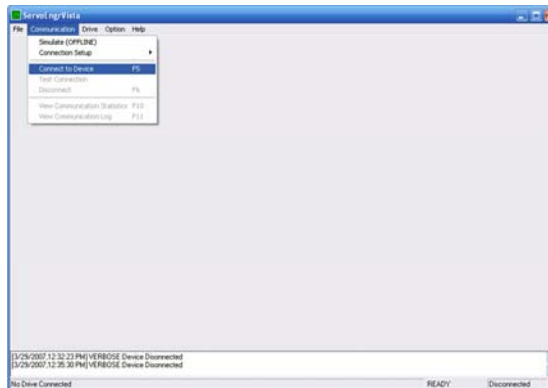


Figure 10 - Connect to Device

If the connection fails then a message window pops up as shown in Figure 11.



Figure 11 - Servovista Connection Failure

In this case, go to Connection Setup → USB/RS232 → AutoDetect (Figure 9). If the drive is detected by the software then a message as shown in Figure 11 pops up. Click yes, and click on connect to device (or hit F5 on the keyboard) to connect to the drive.



The software gets connected to the drive and you will see Figure 12 under Device Manager Tab.

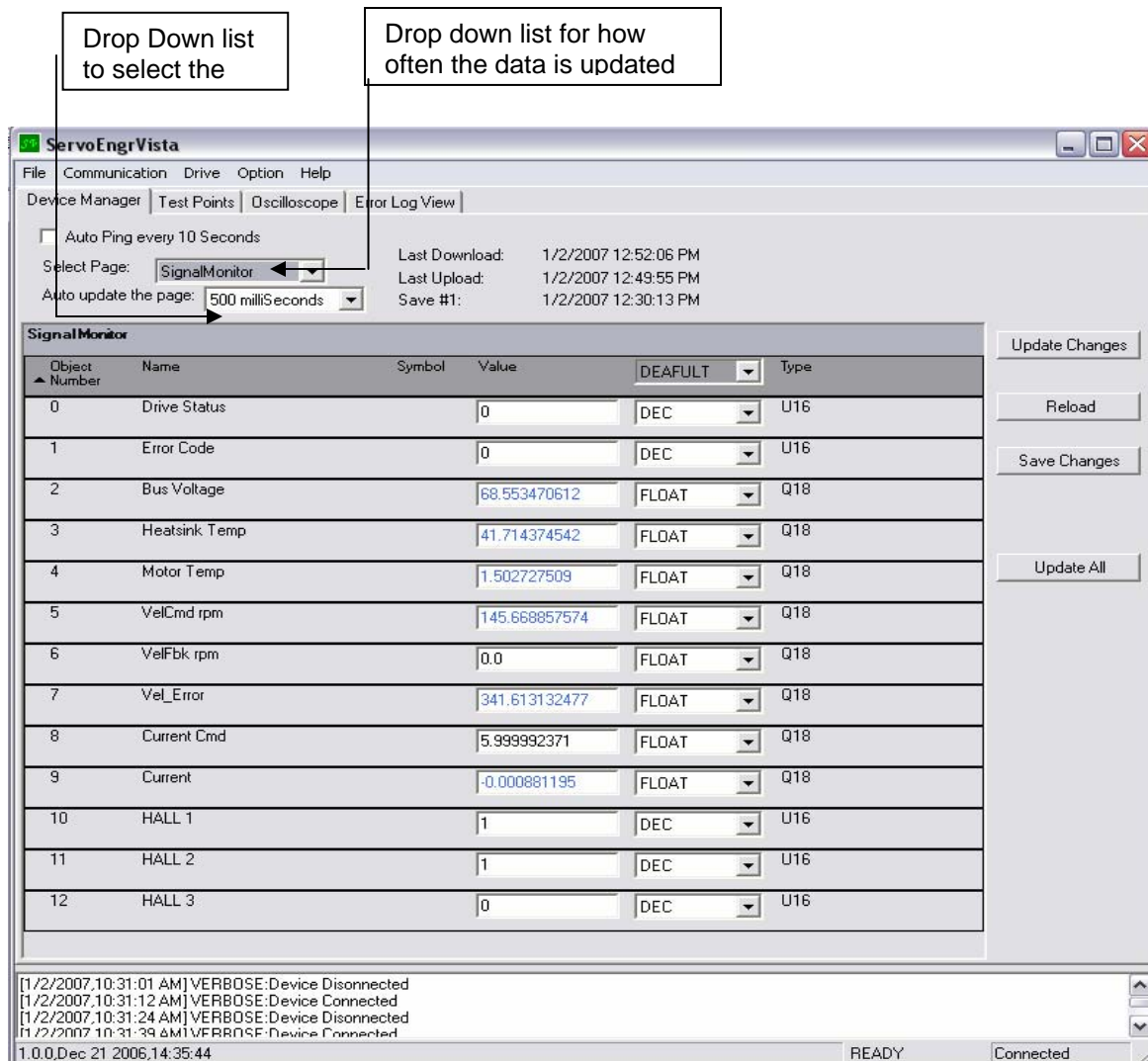


Figure 12 – ServoVista Software Status/Values Page

This page displays the status/values of various signals. Signals page is shown above.

Please see the Quick Startup and Screen Definition Manual to run the software.