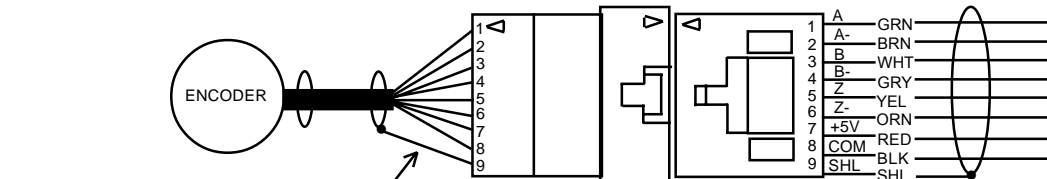
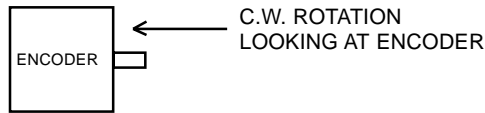
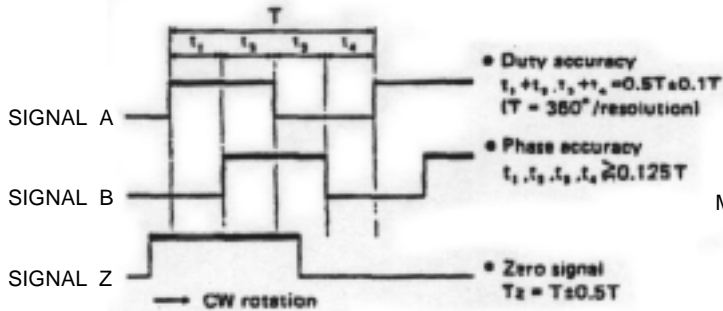


# ENCODER ACCURACY

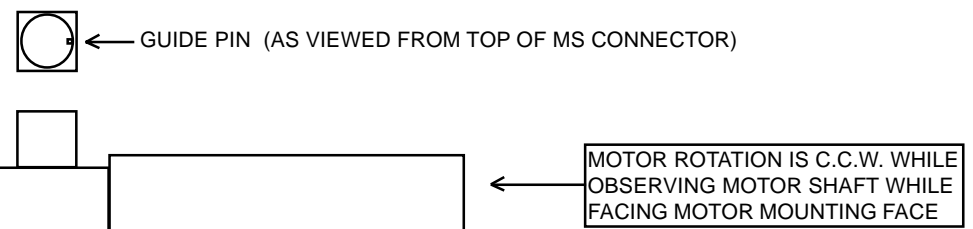


If you are using a HEIDENHAIN encoder **DO NOT** hook up the shield to the F2 connector on the encoder side. The reason is the Heidenhain encoder attaches the shield in the encoder body and if you hook up this shield it will hook up the shield to ground on both ends of the cable and you will have in effect no shield at all.

**F2 CONNECTOR (ENCODER SIDE)**  
 CONNECTOR P/N MOLEX PART # 70107-0008  
 PIN P/N MOLEX PART # 16-02-0109

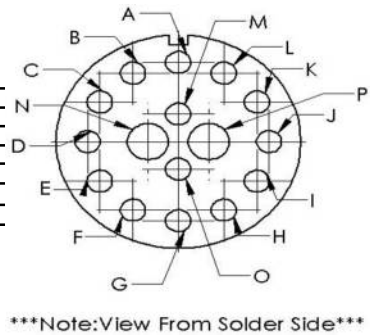
**F2 CONNECTOR (MOTOR SIDE)**  
 CONNECTOR P/N MOLEX PART # 50-57-9409  
 PIN P/N MOLEX PART # 16-02-0097

Rev.	By	Date	Description
F	WM	1/99	Updated drawing in computer format, and made notes for other encoder types.



MS connector Pin out information for MS-3102A-24-7-P (on motor)  
 MS-3106A-24-7-S (mating connector)  
 Note : use clamp on mating connector.

SIGNAL	COLOR	
MOTOR (+)	RED	P
MOTOR (-)	BLACK	N
MTR CASE GRD	GREEN	G
TACH (+)	RED	O
TACH (-)	BLACK	M
CHANNEL A	GREEN (1)	A
CHANNEL A NOT	BROWN (1)	B
CHANNEL B	WHITE (1)	C
CHANNEL B NOT	GRAY (1)	D
CHANNEL Z	YELLOW (1)	E
CHANNEL Z NOT	ORANGE (1)	F
+5 V at 100 ma	RED (1)	H
GROUND	BLACK (1)	I
SHIELD	SHIELD (1)	L



Notes:  
 (1) Wire Color may vary depending on encoder being used. Use Description on encoder or encoder documentation to match the proper pin on the MS connector to the proper encoder channel.

DRAWN BY 1/99

APPROVED BY 1/99

COMPUTER FILE C:\PM5\DWGSDWG1039A.PM5

THIS DRAWING CONTAINS INFORMATION PROPRIETARY TO SERVO DYNAMICS AND MAY NOT BE REPRODUCED OR USED FOR OTHER THAN MAINTENANCE PURPOSES WITHOUT PRIOR WRITTEN PERMISSION FROM AN OFFICER OF THE ABOVE FIRM.

**SERVO DYNAMICS CORP.**

TITLE **BRUSH MOTOR MS TO F2 & F2 TO ENCODER**

SIZE	DRAWING NUMBER	REV	DATE
	1039-HE	F	1/99
SCALE	DO NOT SCALE THIS DRAWING		